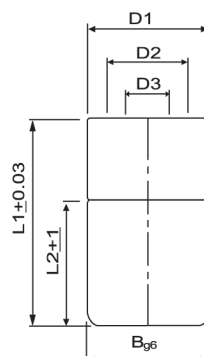




DATE INSERTS

Three-lay Combined Date Stamp

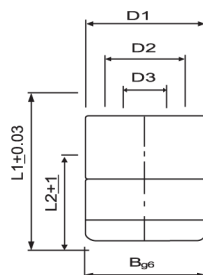
This kind of stamp, combined with Year and Month, doesn't need two date stamps, and therefore it can save machining cost and mould space. It is composed of 12 months and 5 years, and so you can use it for four years without change. It is much stable in quality than the replacement type, thus saving costs. (Begin from the year of 2010).



European Standard=Size					
D1	D2	D3	L1	L2	B
8	5	2.5	20	12+1	8g6
10	6	3	20	12+1	10g6
12	8	4	20	12+1	12g6
16	10	5	20	12+1	16g6
20	12	6	20	12+1	20g6

Three-lay Combined Date Stamp

This kind of stamp, combined with Year and Month, doesn't need two date stamps, and therefore it can save machining cost and mould space. It is composed of 12 months and 5 years, and so you can use it for four years without change. It is much stable in quality than the replacement type, thus saving costs. (Begin from the year of 2010).



Standard=Size					
D1	D2	D3	L1	L2	B
6	4	2	12	6+1	6g6
8	5	2.5	12	6+1	8g6
10	6	3	12	6+1	10g6
12	8	4	14	7+1	12g6
16	10	5	14	7+1	16g6
20	12	6	16	8+1	20g6